

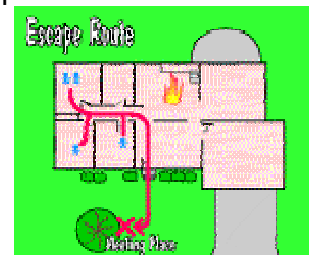


Fire Safety For People with Disabilities

Plan Around Your Abilities

If you have a disability, consider how it could affect your ability to escape from a fire. Talk to other members of your household about your special needs.

Every home should have an escape plan and all members of the household should practise it at least twice a year. Everyone should know at least two ways out of every room, and every way out of the building. If your disability requires special arrangements, make them part of your escape plan.



For example, if you cannot escape on your own, designate a member of the household to help you and decide on backups in case the person is not home.

Know Your Exits

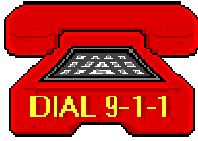
Its especially important for persons with limited mobility to sleep near an exit. If you live in a multi level home, its best to sleep on the ground floor and near an exit. Consider having ramps constructed for emergency exits.

Install Smoke Alarms

Smoke alarms save lives by warning occupants about fire in time to escape. Have smoke alarms installed on every level of the home and near sleeping areas. If you have difficulty hearing there are smoke alarms that flash a light as well as sound an alarm.

Sleep Near a Phone

IN AN EMERGENCY



The majority of fatal home fires occur at night and you may have to escape through the dark. If you are unable to leave on your own call the fire department and tell them where you are. Install a telephone extension in your sleeping area. If you have a cordless phone try to take it with you if you have to escape.

Keep things you need near your bed

Have a working flashlight near your sleeping area. You may need it to escape in the dark or to signal firefighters if you are trapped by fire. Also, keep glasses, canes, walkers, mobility devices etc near your bed, as you may need them to escape.

Escape Tips

If your smoke alarm goes off, don't hesitate. Respond immediately by following your escape plan. If you need help, make noise, the person designated to help you may not know there is a fire. Call the fire department as soon as possible.

Crawl low under smoke to your exit. Air is cooler and cleaner 1-2 feet above the floor. Test doors to make sure its cool. If it's warm - don't open it. If it's cool, open the door cautiously and be ready to slam it in case there is fire on the other side.

If You Cannot Escape

If blocked exit paths or mobility problems prevent you from escaping, close as many doors as possible between you and the fire. Use duct tape to seal around doors and cover vents to prevent smoke from coming in. Call the fire department, even if someone has already reported the fire, and tell them exactly where you're trapped. Wait by a window to be rescued. If possible signal to firefighters by waving a flashlight beam or light coloured cloth.



Questions?

If you have any questions regarding home escape planning or fire safety please contact the Pickering Fire Service – Fire Prevention Division at 905.839.9968 (or your local Fire Department).